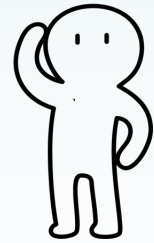


Evaluate the facilities and support services in UMFIH!

WHEN?

23 October – 5 November 2023



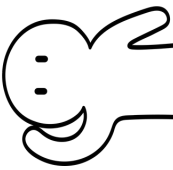
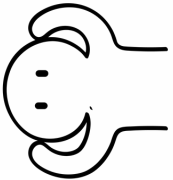
HOW AND WHERE DO YOU EVALUATE?



Using the **unique and anonymous** link received on the institutional address (...@elearn.umfcluj.ro) that opens the feedback form on the evaluation platform.

WHO IS THE EVALUATION ADDRESSED TO?

Students who are at least in **the second academic year, in any of the bachelor's programmes.**



ARE RESPONSES ANONYMOUS?



YES! Like all other evaluation processes in UMFIH, student opinions are **confidential**. The Quality Assurance Department **statistically processes** the answers and sends them to each evaluated department.

WHAT IS THE PURPOSE OF THE EVALUATION?

To collect data regarding the **degree of knowledge, use and satisfaction of students** with the services and facilities provided by the university. The results will be used to identify the most appropriate **measures to improve** student services and facilities so that **all students** have the **best possible academic experience.**

